

Advanced Productivity and Document Workflow

Take Control Over Network Printers

Imagine seeing the status of all RICOH® peripherals on a shared network directly from your desktop...knowing precisely what device is available, the configuration of each – even the levels of paper and toner – at the click of the mouse. This translates into significant increased end-user productivity and complete control for network administrators.

In today's networked office, proactive management of document workflow is essential. To address this challenge, Ricoh has developed SmartNetMonitor, an easy-to-use network utility that facilitates a flexible and efficient means of controlling supported networked Ricoh peripherals. Ricoh printers, facsimiles, and scanners, as well as MFP's (color and black-and-white) can be managed with SmartNetMonitor.

SmartNetMonitor increases the value of supported Ricoh networked peripherals by enabling an efficient method of installing, monitoring, and managing shared resources. Designed for both Clients and Administrators, SmartNetMonitor is certain to simplify the way network users handle their daily workflow.

Address	Model Name	Name	Printer Status	Copy Status	Fax Status	Scanner Status
172.16.35.23	H357238	H357238A 2.1.5	Ready			
172.16.35.26	A650 1075	RHPS2LAP	Ready	Energy Sav.	Energy Sav.	Energy Saver Mode
172.16.35.29	A650 EB-105	A650 EB-105	Ready			
172.16.35.31	E-716	Color Controller E-710	Ready			
172.16.35.32	COLOR_AP204	NMCOMGAP204_PS	Ready			
172.16.35.34	H3067220B	H3067220B 1.3.6	Ready			
172.16.35.35	RICOH LASER AP1000	NMCPGFAV5038L_PS	Ready			
172.16.35.36	A650 AP2700	AP2700_OMG003_PS	Ready			
172.16.35.42	H357238	H357238A 2.1.5	Ready			
172.16.35.43	COLOR_AP305	NMCTSC_AP305_PS	Ready			
172.16.35.44	A650 AP3800C	RHPSAB4D	Alert			
172.16.35.45	H3067220C	H3067220C 1.3.7	Ready			
172.16.35.46	COLOR_AP306D	AP306D_WPM_PS	Ready			
172.16.35.49	COLOR_AP306D	AP306D_MKTDEV	Ready			
172.16.35.228	COLOR_AP305	AP305_WATSON_PS	Ready			

Local network lists can be quickly generated to identify and provide status information of supported network devices.

Network Administrators will use Ricoh's SmartNetMonitor for Admin to install and manage all supported Ricoh-connected peripherals on their network.

Two initial key functions for the Administrative module are NIC Configuration and Group Management of Devices.

Network Interface Card Configuration

Automatically installed as part of the SmartNetMonitor for Admin module, the NIC Setup Tool installs and configures the supported Ricoh network products onto the network.

Group Management of All Network Devices

SmartNetMonitor for Admin provides an easy way for Network Administrators to logically group Ricoh-connected products by department, workgroup or peripheral capability. Up to 100 groups can be created, edited or deleted easily.

System Status Monitoring

A key advantage over competitive monitoring and management software is the ability to track the activities of all supported Ricoh peripherals connected to the network. Network Managers can identify the configuration of each device quickly and easily.

In addition, the status of toner levels in supported Ricoh printer and facsimile products, memory capacity of the document server, and lists of jobs sent from any networked PC station can be monitored.

Monitoring Efficiency and Output Management Options

This is the component of SmartNetMonitor that sets it apart from competitive network management utilities. SmartNetMonitor for Client is the portion of software that resides on each users' computer desktop.

An icon is placed on the Windows Taskbar, constantly updating and informing the user of the status of supported devices on the network, including supported MFP's and printers.

Increased Print Management Options

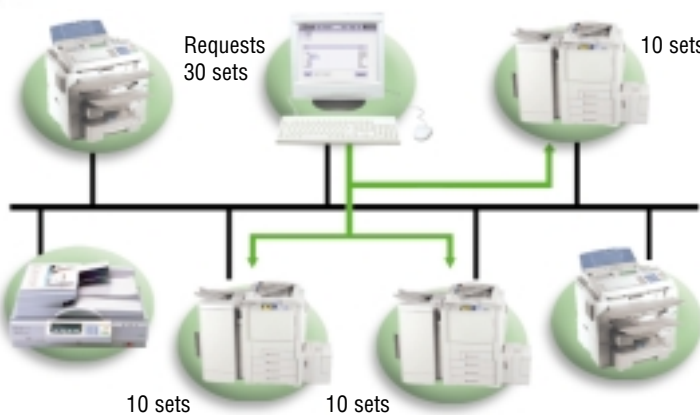
In a continuing effort to support network Clients, Ricoh has included in it's SmartNetMonitor for Client module the ability to increase print management capabilities.

When SmartNetMonitor for Client is installed, users have immediate access to key functions, such as Peer-to-Peer Printing, Recovery Printing and Parallel Printing.

Recovery Printing

When a designated supported printer or MFP cannot print a job due to misfeed, out of toner or out of paper conditions, SmartNetMonitor for Client can automatically select an alternate printer to complete the job. The user may also decide to select another printer manually from a list of printers on the network.

The Parallel Printing Process



Parallel Printing

Parallel Printing results in significant time savings when Clients are sending long print runs over the network. SmartNetMonitor for Client allows users to split a print job between Ricoh output devices. Up to 11 Ricoh output devices can be used to split long print runs.

If SmartNetMonitor detects that a pre-determined number of prints (indicated by the user) is required, the Parallel Print function branches through the network to search for additional appropriate devices (pre-selected by the user). These devices are Ricoh products of the same type and configuration.

When a designated printer is found, the print job is divided equally among those appropriate peripherals. Parallel Printing works only when multiple sets of a document are required. It cannot divide a single document between Ricoh devices.

Peer-to-Peer Printing

Peer-to-Peer Printing enables your clients to print directly to a Ricoh-connected system via TCP/IP, eliminating the need for a print server. In addition, this feature of SmartNetMonitor is independent of the type of Network Operating System (NOS) in use (i.e., Novell Netware, Windows NT, etc.).

Also, because print jobs are not following the Client/Server route, users may see their jobs print faster.

The Peer-to-Peer Printing Process



My Job List Menu

Searching through a list of multiple documents sent by multiple users to multiple peripherals can be both time-consuming and cumbersome. Checking for the status of your particular print job can also be frustrating.

SmartNetMonitor for Client eliminates the need to search through all documents in the queue through the "My Jobs List". To view only the projects sent from his/her workstation, the Client accesses the "My Job List Menu" to track the status of a document.

A User ID is entered in the Property Settings for each printer driver (in the case of printing). If an ID is not entered, a "?" symbol appears in the User ID column.

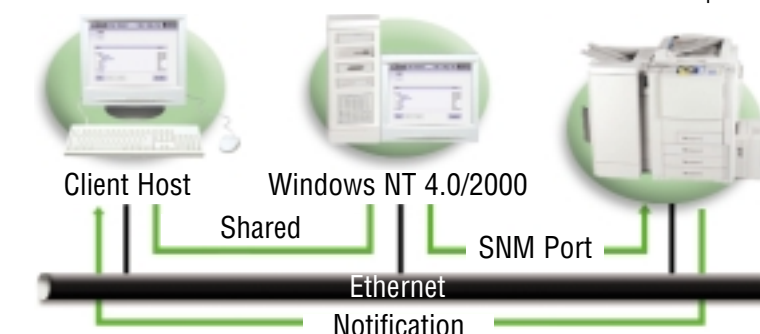
SmartNetMonitor Port

The SmartNetMonitor port is designed to support Parallel Printing, Recovery Printing and Peer-to-Peer activities.

Supported protocols include TCP/IP, Internet Printing (IPP), and NetBEUI. PDL's supported are PCL5e, PCL 6 (XL). PostScript Level 2 and Level 3 are NOT supported for these printing solutions.

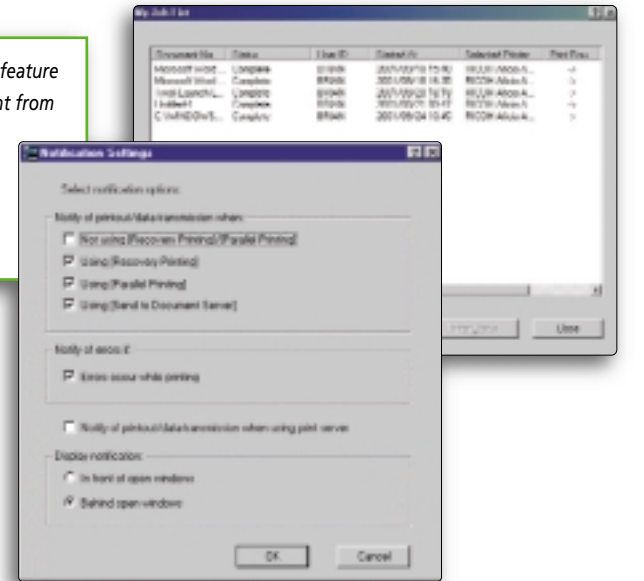
SmartNetMonitor supports Ricoh's "Next Generation Technology" products, via RPCS drivers and IPDL-C drivers (for color devices).

The Notification Process



Right: At the click of a mouse, the "My Jobs List" feature brings up a queue of just those projects sent from your own workstation.

Below: Notification menus alert users to multiple setting options and important features relating to their job.



Web Status Monitor

Web Status Monitor enables users to view the current status and availability of Ricoh networked output devices. It is independent of SmartNetMonitor for Client software and no additional software installation is required.

The key purpose for the Web Status Monitor is to provide a network printer management solution to users who:

- ▶ Use a network operating system other than Windows, such as MAC OS or UNIX.
- ▶ Do not want to install additional network utilities.

Notification Menus

SmartNetMonitor for Client offers a Notification Menu, where multiple settings are established for advising the user of important activities relating to a print job.

These notifications are provided when jobs are rerouted, completed, or have encountered error situations. Notifications can be set for Parallel and Recovery Print options. Documents sent through the Client/Server environment can also send notifications.